

Tables and charts

Tables and charts are generally based on statistical information available on March 21, 2007, apart from financial market data, which are from February 28, 2007. A list of symbols is on p. 2.

	A	Tables
98	Table 1	Main monthly indicators
100	Table 2	Historical economic indicators
	B	Charts
102	Chart 1	Consumer price inflation 1940-2009
102	Chart 2	Economic growth 1945-2009
102	Chart 3	Growth of GDP, private consumption and gross fixed capital formation 1980-2006
102	Chart 4	Private consumption, public consumption and gross fixed capital formation as percentage of GDP 1980-2006
102	Chart 5	Quarterly economic growth Q1/1998 - Q4/2006
102	Chart 6	Components of economic growth Q1/1998 - Q4/2006
103	Chart 7	Gross national saving and fixed capital formation 1960-2009
103	Chart 8	Current account balance 1945-2009
103	Chart 9	Merchandise trade January 1996 - February 2007
103	Chart 10	Exports and imports of services Q1/1996 - Q4/2006
103	Chart 11	External debt and assets Q1/1998- Q4/2006
103	Chart 12	External debt position 1980-2006
104	Chart 13	Real effective exchange rate of the Icelandic króna 1960-2006
104	Chart 14	General government revenues and expenditures 1980-2006
104	Chart 15	Treasury borrowing 1991-2006
104	Chart 16	General government balance and debt 1980-2006
104	Chart 17	Household debt as percentage of disposable income 1980-2006
104	Chart 18	Real wages January 1990 - February 2007
105	Chart 19	Unemployment and labour participation January 1996 - February 2007
105	Chart 20	Short-term interest rates January 1997 - February 200
105	Chart 21	Long-term interest rates January 1997 - Febraury 2007
105	Chart 22	Real yield and broad money 1960-2006
105	Chart 23	M3, DMB lending and base money January 1997 - February 2007
105	Chart 24	Deposit money bank lending by sector January 1992 - February 2007
106	Chart25	Growth of credit system lending 1994-2006
106	Chart 26	Credit system liabilities at end of year 1990-2006
106	Chart 27	Reserve assets and Central Bank net foreign position Q1/1996 - Q4/2006

Table 1 Main monthly indicators

	Consumer prices % change in CPI ¹ over the previous		Exchange rate % ch. in effective exchange rate ^{1,2}		Interest rates (end of period, %)				Money and credit (end of period) ⁵				
	1 month	12 months	1 month	12 months	Central Bank		Long-term rates ⁴		Base money	M3	DMB lending ⁶	DMB foreign liabilities	
					repo yield	3-month REIBOR ³	RIKB 10 0317	RIKB 13 0517					RIKS 15 1001
2001	.	6.7	.	-16.7	10.10	12.5	.	.	5.1	-14.2	14.9	13.4	30.1
2002	.	4.8	.	3.0	5.80	6.2	.	7.6	4.9	17.2	15.3	0.9	-2.8
2003	.	2.2	.	6.4	5.30	5.1	.	7.9	4.3	-33.5	17.5	16.0	67.3
2004	.	3.2	.	2.1	8.25	8.6	7.8	7.4	3.6	77.7	15.0	39.5	59.2
2005	.	4.0	.	11.4	10.50	10.2	7.9	7.8	4.1	23.1	23.2	51.5	96.4
2006	.	6.8	.	-10.5	14.25	15.2	9.8	8.9	4.9	25.4	19.4	41.4	73.5
2005													
July	0.1	3.5	1.3	11.5	9.50	9.3	7.6	7.3	3.7	-18.2	19.1	54.8	110.4
August	0.2	3.7	0.5	11.5	9.50	9.3	7.4	7.4	3.6	-10.9	21.1	50.5	100.7
September	1.5	4.8	2.6	14.7	9.50	10.0	7.6	7.7	3.6	-5.4	12.9	55.8	82.6
October	0.6	4.6	3.5	18.1	10.25	10.1	7.8	7.8	4.0	-6.4	19.4	49.0	91.6
November	-0.2	4.2	0.1	16.5	10.25	10.1	8.0	7.8	4.2	15.7	27.2	53.7	97.9
December	0.4	4.1	-3.0	8.2	10.25	10.2	7.9	7.8	4.1	23.1	23.2	51.5	96.4
2006													
January	0.3	4.4	1.7	8.0	10.50	10.3	8.3	8.3	4.5	-3.9	17.8	51.1	95.7
February	-0.1	4.1	-3.1	3.1	10.75	10.4	8.0	7.9	4.0	40.8	20.6	51.7	113.4
March	1.1	4.5	-8.2	-7.4	10.75	11.3	9.1	8.6	4.4	85.2	26.2	56.9	126.1
April	1.1	5.5	-8.0	-12.8	10.75	11.7	10.4	9.1	4.3	64.6	26.2	57.7	121.3
May	1.4	7.6	0.4	-10.1	11.50	11.9	9.9	8.9	4.0	44.9	22.2	52.1	94.0
June	1.2	8.0	-3.1	-14.9	12.25	12.5	10.3	9.1	4.4	8.5	20.0	53.7	96.4
July	0.5	8.4	0.4	-15.7	12.25	12.6	9.8	8.9	4.5	36.8	21.0	52.1	78.7
August	0.3	8.6	4.7	-12.2	13.00	13.3	8.8	8.0	4.3	50.4	17.9	47.2	80.0
September	0.6	7.6	1.0	-13.5	13.50	13.5	8.6	7.8	4.1	30.7	17.9	42.2	81.2
October	0.2	7.2	3.2	-13.8	14.0	14.3	9.2	8.0	4.6	60.2	19.3	39.5	75.1
November	0.0	7.3	-2.7	-16.2	14.0	14.5	9.7	8.4	4.8	37.3	9.4	36.8	75.5
December	0.0	7.0	-2.1	-15.4	14.0	15.2	9.8	8.9	4.9	25.4	19.4	41.4	73.5
2007													
January	0.3	6.9	0.3	-16.6	14.3	15.1	9.3	8.3	5.1	33.1	15.4	37.3	68.7
February	0.4	7.4	3.5	-10.9	14.3	15.3	9.9	8.8	5.5	44.4	17.9	32.1	55.8
March	-0.3	5.9

1. Percentage changes between period averages. 2. Based on the official effective exchange rate basket (trade-weighted). Positive sign indicates appreciation of the Icelandic króna. 3. Average yield on the interbank market in Icelandic króna. 4. For Treasury bonds and HFF bonds, the quoted yield is in excess of changes in the CPI. Trading with HFF bonds began in July 2004; prior figures are for housing bonds. 5. Annual figures are changes over year. Latest figures are preliminary. 6. DMBs = deposit money banks = commercial and savings banks and other institutions permitted to accept deposits from the public.

Table 1 (continued) Main monthly indicators

	Foreign exchange market and reserves				Foreign trade and external conditions					Labour market		Treasury financial balance, % of revenues, from Jan. 112		Asset prices 12-mo. % changes	
	Gross foreign currency reserves:				Trade balance (b.kr.)	Merchandise exports (b.kr.)	Merchandise imports (b.kr.)	Marine product prices 12-mo. % ch. ⁹ (króna) ¹⁰	Real exchange rate of	Unemployment	Wages, 12-mo. % change ¹¹	Equity prices ¹³	Housing prices ¹⁴		
	Merch. imports/	For. short-term liabil. ⁸	as ratio of:	net purchases (b.kr.)										CB	
2001	36.6	2.1	0.40	-29.5	-6.7	196.4	203.1	1.6	87.3	1.4	8.8	-0.7	-11.2	3.1	
2002	37.2	2.5	0.20	4.5	13.1	204.3	191.2	3.4	91.7	2.5	7.2	-7.4	16.7	7.5	
2003	58.1	3.5	0.25	43.2	-16.9	182.6	199.5	0.4	96.0	3.4	5.6	-8.1	56.4	9.1	
2004	65.6	3.6	0.24	27.2	-37.8	202.4	240.2	0.6	98.1	3.1	4.7	0.0	58.9	23.3	
2005	67.3	2.9	0.16	24.6	-94.5	194.4	288.9	8.9	111.4	2.1	6.8	8.5	64.7	31.0	
2006	68.5	2.8	0.20	18.0	-148.6	242.7	391.3	8.5	104.2	1.3	9.5	17.3	15.8	5.0	
2005															
July	58.8	2.8	0.17	0.7	-10.0	13.9	23.9	8.1	109.3	2.0	6.6	3.6	38.3	39.4	
August	58.3	2.7	0.18	0.8	-13.0	14.4	27.4	10.1	110.3	1.8	6.7	4.9	38.0	40.4	
September	70.7	3.2	0.20	2.5	-10.4	16.9	27.3	11.5	113.7	1.4	6.9	4.4	21.8	37.0	
October	59.5	2.7	0.16	3.2	-5.5	16.0	21.6	10.3	118.0	1.4	6.9	6.7	39.0	36.4	
November	64.2	2.8	0.16	3.4	-11.0	16.7	27.8	9.0	118.7	1.5	7.3	6.4	48.4	35.5	
December	67.3	2.9	0.16	3.5	-9.4	13.7	23.1	5.1	115.4	1.5	7.2	8.5	64.7	31.0	
2006															
January	68.5	2.8	0.17	1.4	-8.4	17.1	25.5	6.0	117.5	1.6	8.3	38.0	69.6	25.3	
February	72.1	2.9	0.12	1.3	-7.8	14.7	22.4	4.5	114.1	1.6	8.6	30.8	74.9	21.7	
March	79.9	2.8	0.10	1.6	-16.1	19.9	36.1	4.2	105.6	1.5	8.6	25.4	50.5	20.9	
April	66.2	2.1	0.08	1.5	-10.8	19.1	29.9	4.9	97.6	1.3	8.4	19.4	35.7	17.7	
May	70.4	2.3	0.1	1.8	-13.7	23.9	37.7	6.8	98.7	1.3	8.7	18.5	41.3	13.2	
June	76.8	2.3	0.1	1.5	-15.4	26.4	41.8	8.3	96.4	1.3	8.8	16.1	32.4	13.1	
July	74.3	2.3	0.1	1.7	-18.6	19.4	38.0	10.7	97.2	1.4	10.2	17.2	22.4	7.5	
August	72.6	2.3	0.1	1.6	-14.4	16.6	31.0	10.7	101.9	1.2	10.6	14.6	28.6	10.8	
September	71.3	2.3	0.1	1.4	-7.4	25.4	32.7	10.2	103.4	1.0	10.8	15.6	35.8	10.5	
October	70.9	2.3	0.1	1.5	-7.0	20.0	27.0	11.1	106.9	1.0	11.0	15.8	35.1	7.2	
November	92.4	2.9	0.1	1.6	-15.9	20.2	36.0	11.7	103.7	1.1	10.5	15.6	21.0	4.8	
December	167.9	4.9	0.2	1.2	-13.1	20.1	33.3	11.2	101.1	1.1	9.8	17.3	15.8	5.0	
2007															
January	160.4	5.0	...	1.9	-6.9	19.2	26.2	...	102.7	1.3	10.1	45.5	12.3	6.9	
February	160.1	107.1	1.3	9.8	...	10.8	5.0	
March	

7. Gross foreign exchange reserves at end of period as a ratio of the average monthly value of merchandise imports. Calculated at fixed exchange rates. 8. The denominator is foreign short-term liabilities of credit institutions (deposit money banks and investment banks). 9. Prices in SDR. Annual figures are % changes between annual averages. 10. Real effective exchange rate of the Icelandic króna based on relative consumer prices (a trade-weighted average of 17 trading partner countries' consumer prices is used). 1980 = 100. 11. Annual figures show change in annual averages. 12. Cash basis. Without privatisation revenues. Adjusted for changed timing of expenditure changes in Jan.-Nov. 2004. 13. The ICEX-15 index. Annual figures are % changes over year. 14. Residential housing in the Greater Reykjavik Area. Annual figures are % changes over year.

Sources: Directorate of Labour, Iceland Stock Exchange (ICEX), Land Registry of Iceland, State Accounting Office, Statistics Iceland, Central Bank of Iceland.

Table 2 Historical economic indicators

Year	Consumer prices ¹		Krona effective exchange rate		Interest rates (%)		Money and credit		Ratio of gr. reserves to merch. imports ⁵	External debt, % of GDP ⁶	Growth of real GDP (%)		
	Consumer price index	CPI inflation (%)	Nominal exchange rate ²	Real exchange rate ³ Relative CPI	Relative ULC	Gov. bonds average yield ⁴	Banks' secured lending (real yield)	Indexed				% change over year	Credit system lending
1978	3.5	44.0	13.9	107.1	117.7	3.3	-13.4	48.7	47.3	62.8	2.6	39.2	6.0
1979	5.0	44.5	18.7	101.7	111.2	3.5	-15.4	55.9	58.1	46.4	2.5	39.7	4.9
1980	8.1	61.8	25.9	101.8	110.4	3.5	-8.3	65.4	66.4	71.1	2.4	35.9	5.7
1981	12.2	50.8	34.7	106.2	115.0	3.2	-1.7	70.5	72.2	54.1	3.0	36.5	4.3
1982	18.4	51.0	54.5	97.7	112.7	3.5	-9.4	58.0	92.0	100.2	2.1	46.4	2.2
1983	33.9	84.2	100.0	91.8	94.1	3.8	-14.2	78.7	85.6	82.9	2.5	57.2	-2.2
1984	43.7	29.2	116.3	96.3	91.2	7.0	3.4	33.4	43.0	40.2	2.1	60.2	4.1
1985	57.9	32.4	148.7	94.8	91.1	6.9	-2.3	47.6	29.7	35.2	2.8	63.6	3.3
1986	70.2	21.3	171.0	97.1	91.9	8.5	4.3	35.0	19.1	20.1	3.6	56.5	6.3
1987	83.4	18.8	177.3	106.0	117.1	8.7	4.7	35.2	42.1	31.4	2.4	49.4	8.6
1988	104.6	25.4	202.6	111.4	126.5	8.7	11.8	24.0	37.2	34.0	2.4	51.3	-0.1
1989	126.7	21.1	254.7	102.4	110.2	7.4	6.5	27.2	25.2	33.8	3.0	56.8	0.3
1990	145.5	14.8	283.7	99.1	98.4	7.0	9.3	14.9	11.0	12.5	3.3	55.2	1.2
1991	155.4	6.8	283.6	101.7	100.3	8.1	10.0	14.4	11.6	15.4	3.2	56.0	-0.2
1992	161.2	3.7	285.0	101.7	101.6	7.4	11.8	3.8	5.3	11.8	4.0	58.8	-3.4
1993	167.8	4.1	308.8	96.2	93.5	6.7	11.5	6.5	5.0	11.1	4.3	66.7	1.3
1994	170.3	1.5	324.8	89.3	82.2	5.0	9.5	2.3	-1.3	4.5	2.6	63.4	3.6
1995	173.2	1.7	322.3	89.4	86.9	5.6	10.1	2.2	0.0	5.9	2.4	63.4	0.1
1996	177.1	2.3	322.9	89.7	87.8	5.5	10.5	6.8	11.8	9.3	3.0	62.5	4.8
1997	180.3	1.8	318.7	90.5	89.2	5.3	11.1	8.7	12.7	11.8	2.6	64.5	4.8
1998	183.3	1.7	313.6	91.9	92.2	4.7	11.8	15.1	30.3	15.1	2.2	69.5	6.4
1999	189.6	3.4	313.1	93.6	96.8	4.4	8.0	17.1	22.8	17.3	2.6	82.0	4.1
2000	199.1	5.0	313.3	96.2	100.0	5.1	12.7	11.2	26.2	17.2	2.1	101.5	4.3
2001	212.4	6.7	376.3	83.7	87.1	5.1	9.4	14.9	13.4	19.2	2.1	121.6	3.9
2002	222.5	4.8	365.2	88.5	91.7	5.2	13.7	15.3	0.9	3.2	2.5	110.4	-0.1
2003	227.3	2.2	343.3	94.1	97.0	4.4	9.4	17.5	16.0	11.8	3.5	136.0	2.7
2004	234.2	3.2	336.3	97.2	94.5	3.9	8.3	15.0	39.5	19.7	3.6	175.5	7.6
2005	243.6	4.0	301.8	107.1	105.9	3.7	10.7	23.2	51.5	30.8	2.9	280.4	7.2
2006	260.6	6.8	337.2	104.2	106.0	4.6	10.9	19.4	41.4	12.5	2.8	440.8	2.6

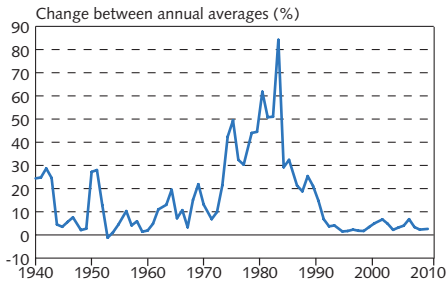
1. Annual averages (May 1988=100) and changes between years. 2. Annual averages. Exchange rate of the krona against a trade-weighted average of foreign currencies. 1983=100. 3. 1980=100. ULC=unit labour cost. 4. Annual average yield of indexed Treasury bonds of all maturities. Yields on Iceland Stock Exchange from 1987. Before that primary market yields. 5. Gross foreign exchange reserves at end of period as a ratio of the average monthly value of merchandise imports. Calculated at fixed SDR exchange rates. 6. Gross debt. Equity capital excluded.

Table 2 (continued) Historical economic indicators

	Components of GDP				External trade (% change from previous year)				General government (% of GDP) ⁷			Labour market (% of labour force)		Wages (% change from previous year)	
	(% change from previous year)		National expenditure	Terms of trade	Goods & services (volume changes)		Curr. acc. balance (% of GDP)	Financial balance	Revenues	Expenditures	Unemployment	Labour participation ⁸	Real wages ⁹	Real income per capita	
	Private consumption	Gross fixed cap. formation			Exports	Imports									
1978	9.0	-5.5	2.1	0.2	3.7	0.2	1.2	0.1	31.0	30.9	0.3	73.6		8.5	
1979	2.8	-1.8	3.4	-8.6	2.5	-0.7	-0.7	0.9	32.4	31.4	0.4	73.0		2.0	
1980	3.4	13.9	5.9	-2.8	3.0	-2.0	-2.0	1.4	35.4	34.1	0.3	74.1		1.1	
1981	6.2	1.2	5.7	-0.4	7.1	-4.1	-4.1	1.3	36.8	35.5	0.4	76.8	0.7	5.4	
1982	4.9	0.1	5.0	-0.7	-0.6	-8.0	-8.0	1.7	37.9	36.2	0.8	77.6	1.7	2.2	
1983	-5.6	-12.7	-8.6	-1.4	-9.7	-1.9	-1.9	-2.0	35.8	37.8	1.0	77.4	-16.7	-12.5	
1984	3.7	9.4	6.4	0.7	9.2	-4.6	-4.6	2.2	36.9	34.7	1.3	77.6	-3.1	-2.5	
1985	4.2	1.0	2.7	-0.9	9.4	-3.9	-3.9	-1.6	35.4	37.0	0.9	79.3	1.2	10.8	
1986	6.9	-1.6	4.5	5.4	1.0	0.5	0.5	-4.0	35.4	39.4	0.7	80.9	5.7	9.5	
1987	16.2	18.8	15.7	4.3	23.3	-3.4	-3.4	-0.8	35.6	36.5	0.4	84.1	9.0	25.8	
1988	-3.8	-0.2	-0.6	-0.8	-4.6	-3.4	-3.4	-2.0	39.5	41.5	0.6	80.1	2.2	-2.7	
1989	-4.2	-7.9	-4.4	-3.9	-10.3	-1.3	-1.3	-4.4	38.5	43.0	1.7	78.7	-9.1	-9.4	
1990	0.5	3.0	1.5	-2.0	1.0	-2.1	-2.1	-3.3	38.1	41.4	1.8	77.5	-4.9	-4.6	
1991	3.0	2.6	3.5	3.4	5.3	-4.0	-4.0	-2.9	39.8	42.7	1.5	76.2	1.4	2.1	
1992	-3.2	-10.3	-4.6	-0.6	-6.0	-2.4	-2.4	-2.8	40.8	43.6	3.1	75.5	-0.8	-2.7	
1993	-4.6	-9.8	-2.9	-3.6	-7.5	0.7	0.7	-4.5	39.0	43.4	4.4	75.3	-2.6	-7.6	
1994	2.9	-0.2	1.8	0.3	3.8	1.9	1.9	-4.7	38.6	43.2	4.8	75.4	-0.3	0.0	
1995	2.2	-1.7	2.2	1.0	3.6	0.7	0.7	-3.0	39.6	42.5	5.0	75.7	2.8	4.4	
1996	5.7	25.0	6.8	-3.2	16.5	-1.8	-1.8	-1.6	40.5	42.0	4.4	81.0	4.0	3.8	
1997	6.3	8.8	5.7	2.0	8.0	-1.8	-1.8	0.0	40.5	40.5	3.9	81.8	3.6	5.1	
1998	10.2	34.9	13.9	5.2	23.4	-6.8	-6.8	-0.4	40.9	41.3	2.8	81.1	7.6	6.2	
1999	7.9	-4.1	4.3	-0.7	4.4	-6.8	-6.8	1.1	43.2	42.0	1.9	81.3	3.3	3.1	
2000	4.2	11.8	5.9	-2.4	8.6	-10.2	-10.2	1.7	43.6	41.9	1.3	82.9	1.6	5.3	
2001	-2.9	-4.5	-2.1	0.3	-9.1	-4.3	-4.3	-0.7	41.9	42.6	1.4	81.6	2.0	-1.4	
2002	-1.5	-14.9	-2.5	0.6	-2.5	1.5	1.5	-2.6	41.8	44.4	2.5	81.0	2.3	2.0	
2003	6.2	12.5	6.1	-4.1	10.8	-4.8	-4.8	-2.8	42.8	45.6	3.4	82.3	3.4	1.7	
2004	6.9	28.0	9.8	-1.3	14.4	-9.8	-9.8	0.2	44.3	44.1	3.1	83.2	1.4	4.3	
2005	12.9	34.3	15.5	0.9	29.4	-16.1	-16.1	5.2	47.6	42.3	2.1	83.5	2.6	4.9	
2006	4.6	13.0	7.4	-3.6	8.8	-26.7	-26.7	5.3	46.7	41.4	1.3	83.6	2.6	5.7	

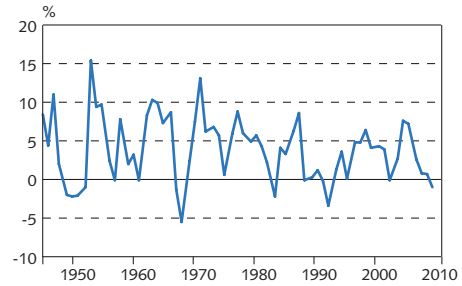
7. Central and local governments and the social security system. 8. Participation rate as per National Economic Institute definition until 1991, but based on Statistics Iceland labour market survey from 1991. 9. Deflated by consumer prices. Sources: Directorate of Labour, Iceland Stock Exchange, Ministry of Finance, Statistics Iceland, Central Bank of Iceland.

Chart 1
Consumer price inflation 1940-2009¹



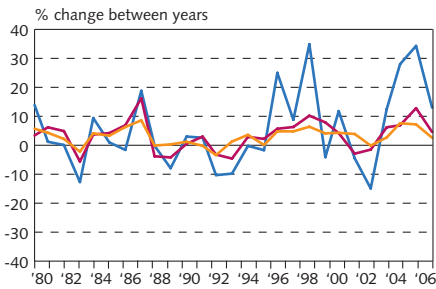
1. Central Bank forecast for 2007-2009.
Sources: Statistics Iceland, Central Bank of Iceland.

Chart 2
Economic growth 1945-2009¹
Change in real GDP between years



1. Preliminary 2006. Forecast 2007-2009.
Sources: Statistics Iceland, Central Bank of Iceland.

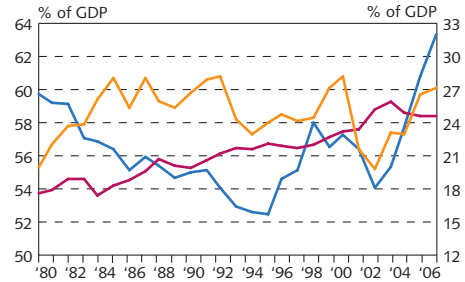
Chart 3
Growth of GDP, private consumption and gross fixed capital formation 1980-2006¹



— Gross fixed capital formation
— Private consumption
— GDP

1. Preliminary 2006.
Sources: Statistics Iceland, Central Bank of Iceland.

Chart 4
Private consumption, public consumption and gross fixed capital formation 1980-2006¹

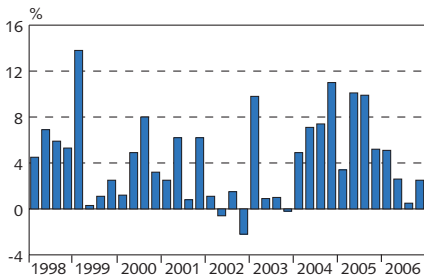


— Gross fixed capital formation (right)
— Public consumption (right)
— Private consumption (left)

1. Preliminary 2006.
Sources: Statistics Iceland, Central Bank of Iceland.

Chart 5
Quarterly economic growth
Q1/1998 - Q4/2006¹

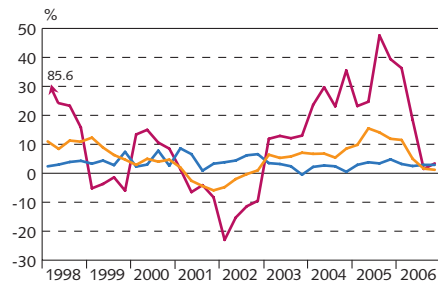
Volume change in GDP over four quarters (%)



1. Latest data are preliminary.
Source: Statistics Iceland.

Chart 6
Components of economic growth
Q1/1998 - Q4/2006¹

Volume change over four quarters (%)



— Public consumption
— Private consumption
— Gross fixed capital formation

1. Latest data are preliminary.
Source: Statistics Iceland.

Chart 7
Gross national saving and fixed capital formation 1960-2009¹

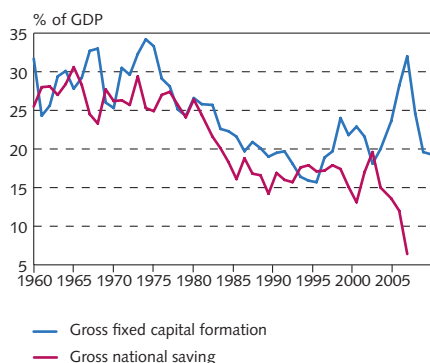


Chart 8
Current account balance 1945-2009¹

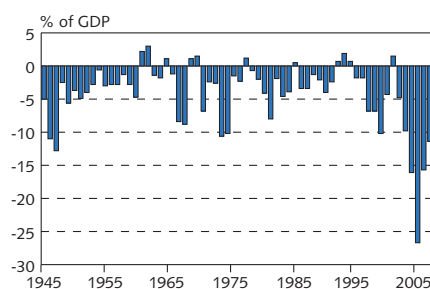


Chart 9
Merchandise trade
January 1996 - January 2007¹
3-month moving averages at fixed exchange rates

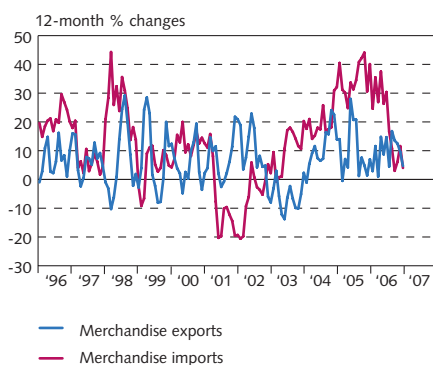


Chart 10
Exports and imports of services
Q1/1996- Q4/2006¹
At constant exchange rate

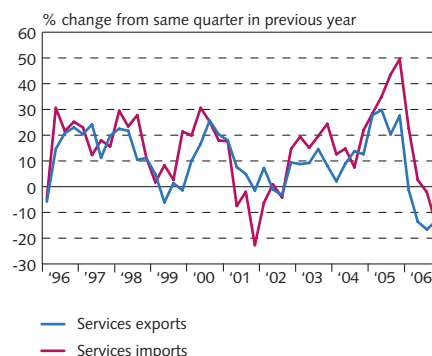


Chart 11
External debt and assets Q1/1998- Q4/2006¹
At current prices

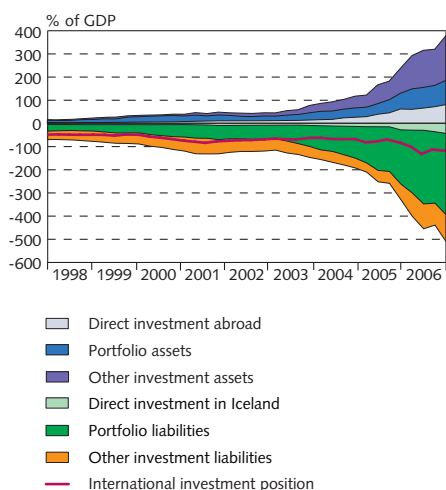


Chart 12
External debt position 1980-2006¹
At end of year and latest quarter

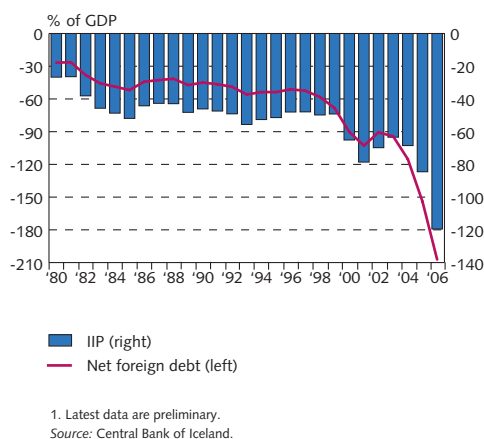
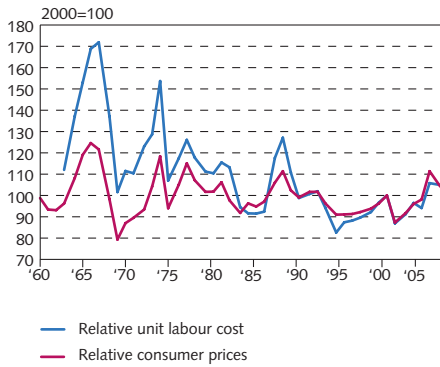
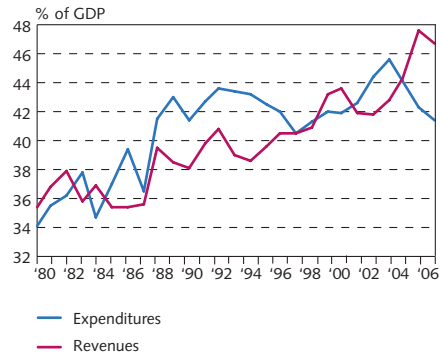


Chart 13
Real effective exchange rate of the Icelandic króna 1960-2006¹



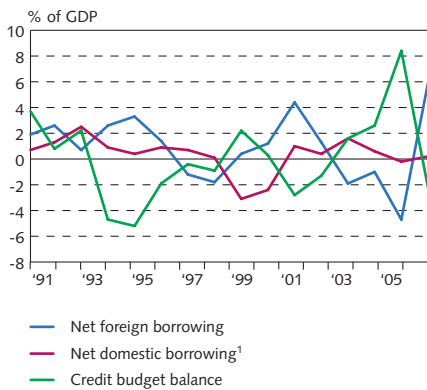
1. Preliminary 2006.
Source: Central Bank of Iceland.

Chart 14
General government revenues and expenditures 1980-2006



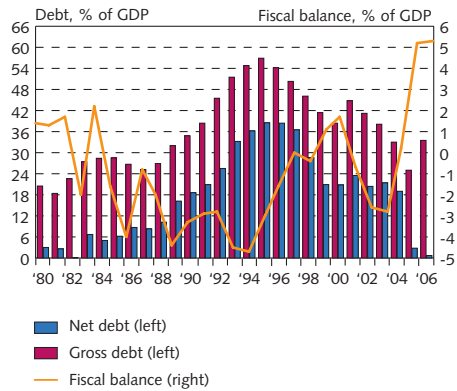
Source: Statistics Iceland.

Chart 15
Treasury borrowing 1991-2006



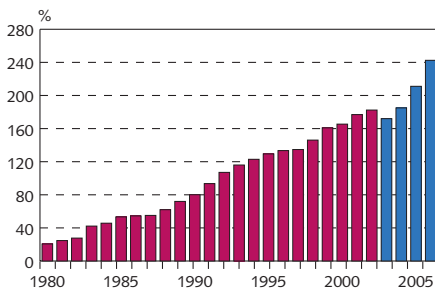
1. Including increase in pension fund commitments and outstanding long-term interest.
Source: Treasury accounts.

Chart 16
General government balance and debt 1980-2006



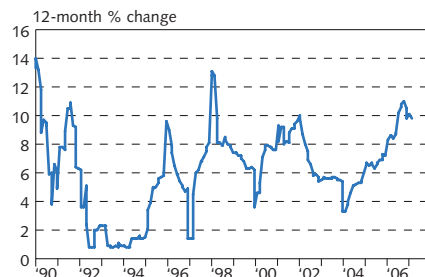
Sources: Statistics Iceland, Central Bank projections.

Chart 17
Household debt as percentage of disposable income 1980-2006¹



1. New classification from 2003 (blue columns). Forecast for 2006.
Source: Central Bank of Iceland.

Chart 18
Statistics Iceland wage index January 1990 - February 2007



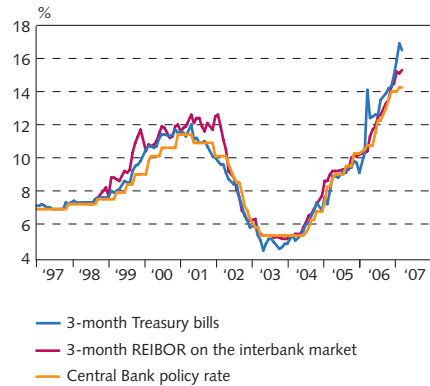
Source: Statistics Iceland.

Chart 19
Unemployment and labour participation¹
January 1996 - February 2007



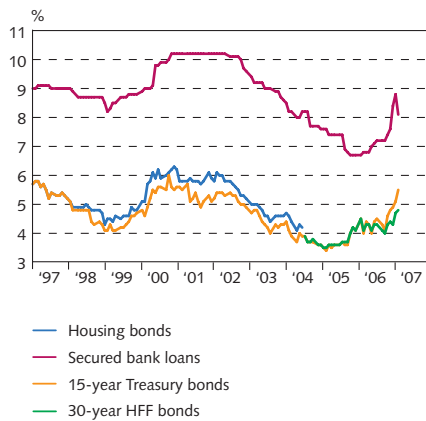
1. Statistics Iceland's labour market survey 1996-2006.
Sources: Directorate of Labour, Statistics Iceland, Central Bank of Iceland.

Chart 20
Short-term interest rates
January 1997 - February 2007
At end of month



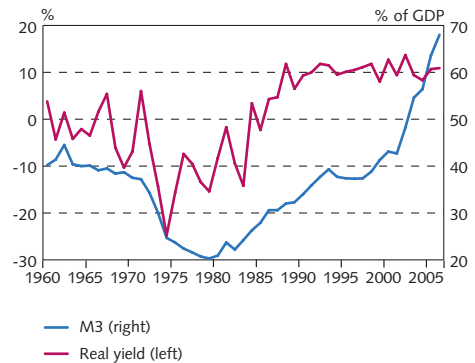
Source: Central Bank of Iceland.

Chart 21
Long-term interest rates
January 1997 - February 2007
At end of month



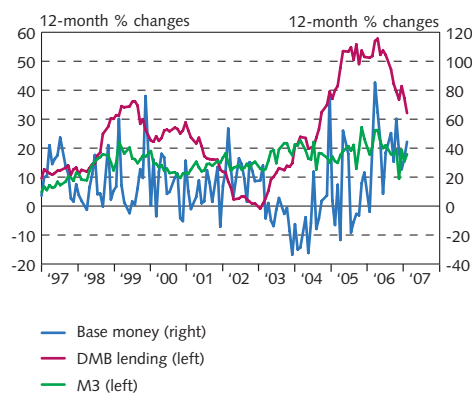
Source: Central Bank of Iceland.

Chart 22
Real yield and broad money 1960-2006¹
Real yield on non-indexed bank loans and
M3 as percent of GDP



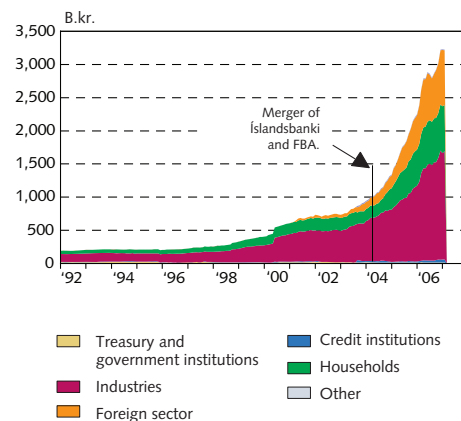
1. Latest data are preliminary.
Source: Central Bank of Iceland.

Chart 23
M3, DMB lending and base money
January 1997 - February 2007¹



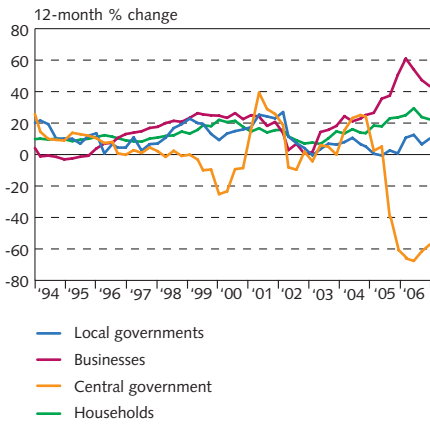
1. Latest figures are preliminary.
Source: Central Bank of Iceland.

Chart 24
Deposit money bank lending by sector
January 1992 - February 2007¹



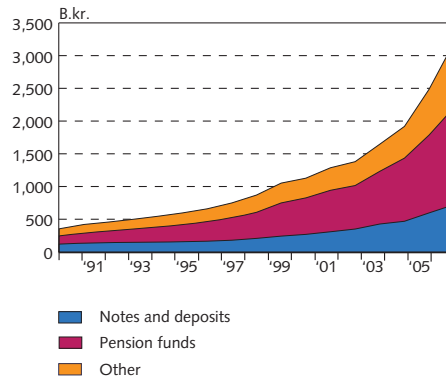
1. Reclassification of lending in September 2003 based on the ISAT-95 standard led to a reduction in household debt figures and an increase in business and municipalities' debt figures. Latest figures are preliminary.
Source: Central Bank of Iceland.

Chart 25
Growth of credit system lending 1994-2006
Lending by sectors¹



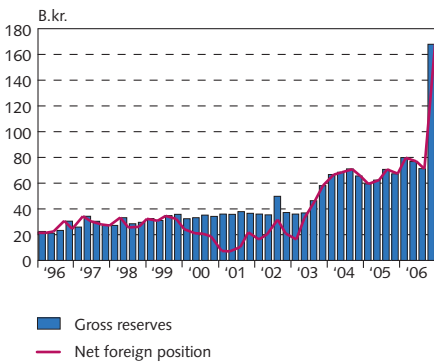
1. Reclassification of lending in September 2003 based on the ISAT-95 standard led to a reduction in household debt figures and an increase in business and municipalities' debt figures. Latest figures are preliminary. Source: Central Bank of Iceland.

Chart 26
Credit system liabilities at end of year
1990-2006¹
At current prices



1. Latest figures are preliminary. Source: Central Bank of Iceland.

Chart 27
Reserve assets and Central Bank
net foreign position, Q1/1996 - Q4/2006¹
At current exchange rates



1. Latest data are preliminary. Source: Central Bank of Iceland.